

# Crawler Type Aerial Platform

HX99B-2

APPLICATION & ATTACHMENT

## 9.7m Platform Height

- Low exhaust gas emissions.
- Low noise design.
- Compact dimensions and small rear-end swing radius allows entry into tight work sites.
- Excellent inching control provided by pilot hydraulic control system.
- Overload warning system

If the load exceeds 120% of the rated load, the overload warning system works to stop normal movements, and warns of overload through the lamp and buzzer.

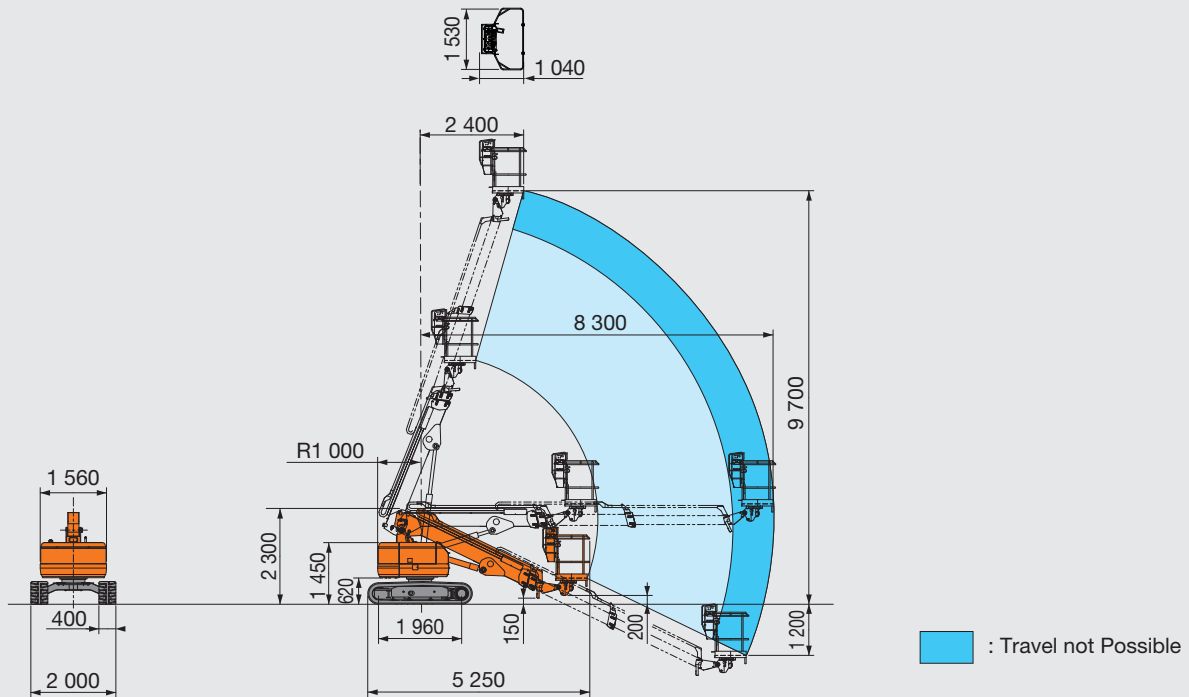


Operating panel designed for safety  
(Upper control panel)

*Notes : Photos include optional equipment. Some of the photos in this brochure show an unmanned machine with attachments in an operating position. These were taken for demonstration purposes only and the actions shown are not recommended under normal operating conditions.*

## WORKING RANGES

Unit: mm



## SPECIFICATIONS

Model		HX99B-2
Maximum work platform height	mm	9 700
Maximum horizontal reach	mm	8 300
Maximum allowable load	kg	200
Work platform turning angle	degree	90 (either direction)
Machine weight	kg	5 400
Shoe width	mm	400 (rubber shoes)
Speed		
Boom raise/lower	s	raise 40, lower 44
Boom extend/retract	s	extend : 20, retract : 20
Swing	min <sup>-1</sup> (rpm)	0.8 (0.8)
Travel	km/h	high : 1.8, low : 1.1
Work platform turn	degree/s	45 / 4
Engine		
Model	Kubota D1105-K2A	
Type	Water-cooled, 3-cylinder swirl combustion chamber type diesel engine	
Rated flywheel horsepower	kW/min <sup>-1</sup> (PS/rpm)	13.6 / 2 200 (12.5 / 2 200)
Service refill capacities		
Fuel tank	L	66
Hydraulic oil tank	L	67

These specifications are subject to change without notice.

Illustrations and photos show the standard models, and may or may not include optional equipment, accessories, and all standard equipment with some differences in color and features.

Before use, read and understand the Operator's Manual for proper operation.