



# TELESCOPIC BOOM LIFT

## T22J (T72J)

High Capacity  
High Productivity

### HIGHLIGHTS

The T22J(T72J) with the working height of 23.8m(78ft) is specially developed for the market by LGMG with a larger platform and heavy load, dual lift capacity. It can carry more materials in daily work and improve work efficiency.

- Dual-capacity design with 300kg(661lbs) unrestricted and 450kg(992lbs) restricted.
- 2.44×0.9m(96×35in) extra-large platform, three-door design, more convenient for material handling.
- Four-wheel drive, 45% climbing ability, better passability and rough terrain ability.
- Continuous 360° turntable rotation expands the operational area.
- A swing-out engine tray is convenient for regular maintenance and repair.



# LGMG Telescopic Boom Lift

## SPECIFICATIONS

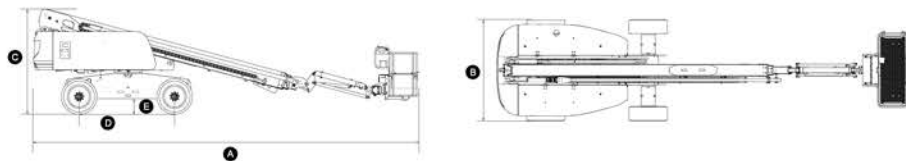
| MODELS                    | T22J (T72J)                              |  |
|---------------------------|--|--|
| Measurements              | Metric                                   | US   |
| Work Height Max.          | 23.8m                                    | 78ft                                       |
| Platform Height           | 21.8m                                    | 71.5ft                                     |
| Horizontal Outreach       | 17.5m                                    | 57.4ft                                     |
| Below Ground Reach        | 2.3m                                     | 90.5in                                     |
| Platform Length           | 2.44m                                    | 96in                                       |
| Platform Width            | 0.9m                                     | 35in                                       |
| Platform Capacity         | 300kg(unrestricted)<br>450kg(restricted) | 661lbs(unrestricted)<br>992lbs(restricted) |
| <b>A</b> Stowed Length    | 10.6m                                    | 417in                                      |
| <b>B</b> Overall Width    | 2.49m                                    | 98in                                       |
| <b>C</b> Stowed Height    | 2.79m                                    | 110in                                      |
| <b>D</b> Wheelbase        | 2.51m                                    | 99in                                       |
| <b>E</b> Ground Clearance | 0.395m                                   | 15.5in                                     |

| PRODUCTIVITY            |                     |                       |
|-------------------------|---------------------|-----------------------|
| Max. Platform Occupants | 2(300kg) / 3(450kg) | 2(661lbs) / 3(992lbs) |
| Turntable Rotation      | 360° continuous     | 360° continuous       |
| Turntable Tailswing     | 1.2m                | 3.9ft                 |
| Drive Speed-Stowed      | 4.8km/h             | 3mph                  |
| Drive Speed-Raised      | 0.8km/h             | 0.5mph                |
| Gradeability-Stowed     | 45%                 | 45%                   |
| Max. Wind Speed         | 12.5m/s             | 28mph                 |
| Turning Radius-Inside   | 2.5m                | 8.1ft                 |
| Turning Radius-Outside  | 5.5m                | 17.8ft                |
| Max.Slope               | 4.5° / 4.5°         | 4.5° / 4.5°           |
| Drive Mode              | 4W Drive,FWS        | 4W Drive,FWS          |
| Tires Type              | RT Foam-filled      | RT Foam-filled        |
| Tires Size              | 355/55D 625         | 355/55D 625           |

| POWER              |               |               |
|--------------------|---------------|---------------|
| Power              | Deutz D 2.9L4 | Deutz D 2.9L4 |
| Fuel Tank Capacity | 100L          | 26.4gal       |

| HYDRAULIC SYSTEM       |      |         |
|------------------------|------|---------|
| Hydraulic Oil Capacity | 180L | 47.5gal |

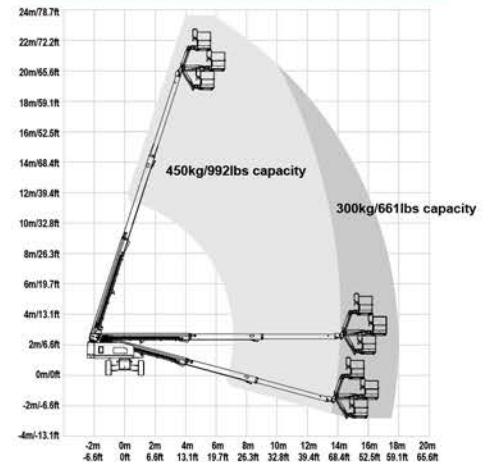
| WEIGHT         |         |          |
|----------------|---------|----------|
| Machine Weight | 12300kg | 27117lbs |



Machines in compliant with EN280 / ANSI 92.20 Standard.

Specifications subject to change without notice. Photos and diagrams in the page are for promotional purposes only. 2021 V1 Version

### T22J (T72J) WORKING RANGE



### STANDARD FEATURES

- Proportional control
- Overload sensing system
- Descent alarm with flashing beacon
- Platform auto-leveling system
- Emergency stop button
- On-board diagnostic system
- Oscillating axle
- 4W drive and 4W break
- Over tilt protection system
- Anti-entrapment protection
- Platform control unit cover
- Hydraulic oil automatic cooling system

### OPTIONAL

- AC power to platform
- Platform tool box
- Telematics
- Hydraulic generator
- Non-marking tires
- Solid tires
- Euro V engine
- T4F engine

## LINGONG GROUP JINAN HEAVY MACHINERY CO., LTD.

Address: No. 2676, Kejia Road, Jinan, Shandong, China  
 Email: sales@lgmg.com.cn Tel: +86 531 6787 9283

## LGMG Europe B.V.

Address: Laanweg 16 3208LC Spijkensisse Rotterdam, The Netherlands

## LGMG North America, Inc.

Address: 1445 Sheffler Dr, Chambersburg, PA. 17201, USA

